

Dental & Medical Equipment




DENTUS

Dental & Medical Equipment



● INTRODUCTION:

Welcome to **Dentus** as a unique concept which goes beyond expectations enhancing the world of your work. DENTUS began to work in the early of 1986, with the motivation of producing superior dental chairs.

Over the years of activity, as a result of the ever increasing growth in product quality, which has been welcomed and encouraged by all users.

Achieving and providing the highest domestic and international standards such as CE & ISO 9001 & ISO 13485 and etc., has led to increasing the most commonly competitive power and export of our products to dozens of countries around the world

Dentus products varieties:

- Wide range of dental chairs and specialised equipment
- Dialysis and blood donation chairs
- Plasma donation chairs
- Medical lab sampling chairs
- Genealogy chairs
- Designing and equipping unique mobile blood donation units
- Designing and equipping of mobile professional dental clinics
- Designing and equipping a variety of specialized medical mobile clinics



DENTUS



- Innovative technology
- Ergonomic design
- Utmost hygienic
- Efficient operation
- Unparalleled comfort
- Harmonious integration
- Environmental protection system
- Long lasting durability
- Competitive quality

● Quality Control:

We have applied solutions in design and production according to strict manufacturing methods of QC systems. From the beginning, quality control has been one of great concern to us.

Thus, we do our best to accomplish our mission which is being superior and honest throughout all our relations.


● Extra 3006 C



● Approvals:

- The first company in Iran to export dental units to other countries
- The best seller brand among Iranian brands
- The most popular brand in Iran
- The largest customer service chain in Iran
- Authenticated by dentistry colleges and most of reputable masters and dentistry clinics
- Approval from ministry of Iranian dentistry and industry institution
- Member of the Confederation of manufacturers and distributors of dental equipment
- Member of association of medical and lab equipment manufacturers (AMEDAL)
- Export to more than 30 around of the world



DENTUS is Selected as Golden Category in TQM from BID  New York 2010 & 2014 in recognition of Commitment to Quality, Leadership, Technology and Innovation

4



● **Extra 3006 C**



- Dental Unit/ Extra 3006

- **General Specifications:**

- Two different types of consoles, hanging (Coil or Straight) hoses and swinging hoses
- All items within easy reach ability
- Comfortable patient positioning
- Modern designed ergonomic patient chair perfect for prolong treatments
- Perfect for prolong treatments
- Long seat upholstery for long legs and tall patients
- Chair can be controlled by: dentist control panel, assistant control panel, foot controller
- Hygienic anti-scratch and disinfectable control surfaces

- **Cuspidor Assembly:**

- Attractive shape, easy performance, utmost hygiene
- Smooth surface, easy to clean
- 180° swivelable porcelain cuspidor
- Detachable cup filler & cuspidor watersheds, for proper cleaning and thermal disinfection



Dental Unit/ Extra 3006 R

Equipped with swinging hoses, easy access to instruments help dentists to have utmost focus on patients. Having a doriot arm for each handpiece which positions the handpiece directly where your hand needs them with no need to compensate for the pull of the handpiece hose.

6



Extra 3006 R

- Utmost Stability



- **Specifications of extra 3006 full automatic chair:**

- Maximum physical comfort for patient & easier doctor to patient interface
- Lifting capacity up to 460 Kg
- Powerful, soft and silent movements
- Suitable for all patients of all different ages and sizes
- Adjustable headrest and comfortable armrests
- Downward rotation of armrest which allows patient easy entry and exit
- Ideal maximum height from ground and minimum height
- High -resistance, stable, shake-less structure



Blood Donor & Dialysis Chair



● Technical Specifications

Ideal shock position and high-maneuver, 2016 revolutionary design hygienic, seamless body, high-stable and powerful, sterilizable handset controller, roll holder, disposable sheet, seamless chair with cellophane cover.



● **Optional Parts:**

- Movable tray for shaker
- Movable tray for operating instruments, stool
- Hanger for donor clothes
- Adjustable and folding serum holder

● **Certifications:**

- The Institute of Standards industrial Research of Iran (ISIR)
- Iranian medical equipment head office
- Health ministry of Iran
- CE
- ISO 9001/2000, ISO 13485

● **Applied by:**

- Iranian blood transfusion organization
- Hospitals and clinics Iranian medical equipment head office



Preclinical & Dental Laboratory Workbench

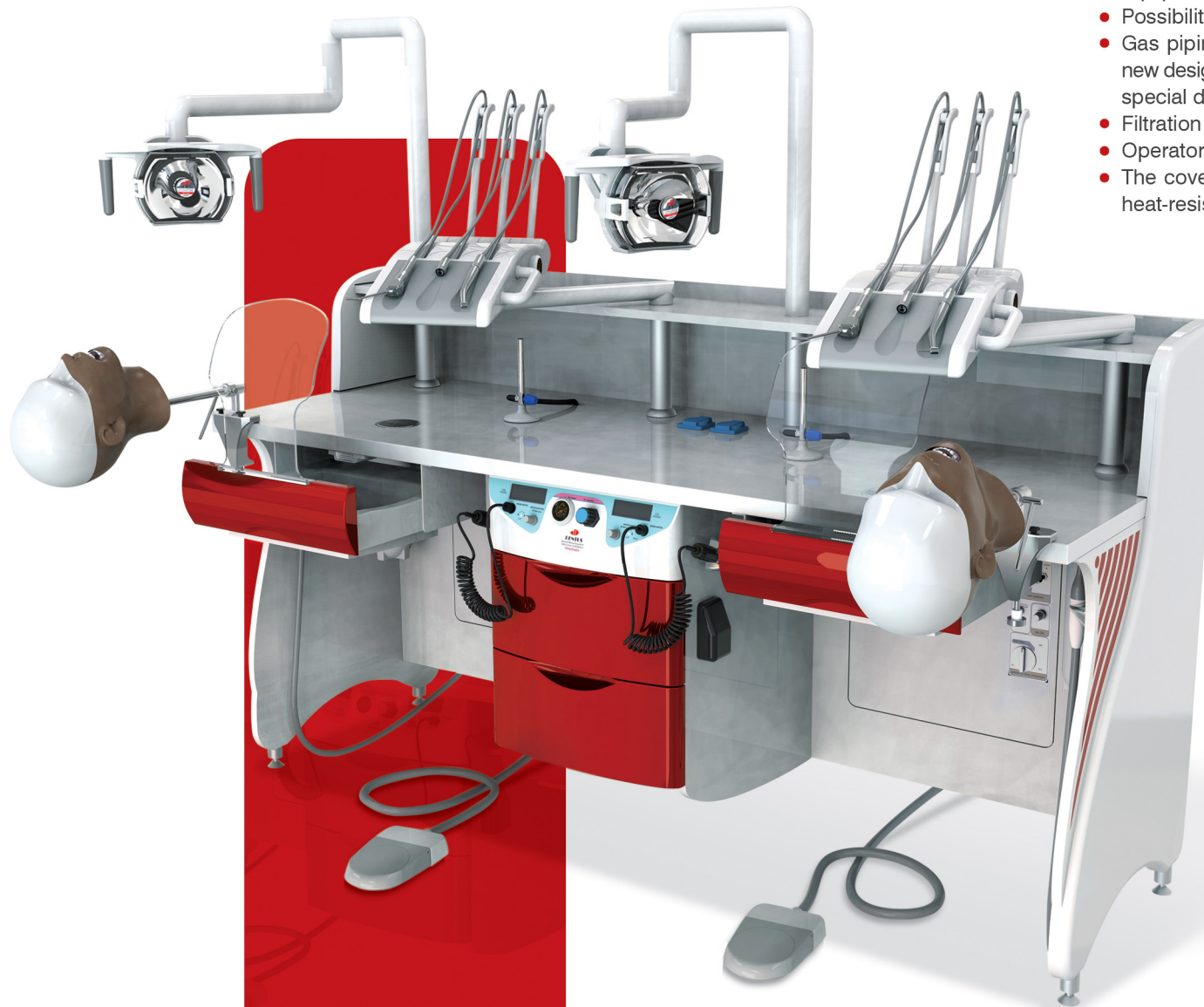


● New panoramic design:

- Equipped with ideal resistance structure against humidity, corrosion and wear
- Resistant base and components against impact and ignition
- Swinging hoses system (New design)
- Equipped with DENTUS dental projector (MOCOM pattern) with adjustable arms
- Having all required systems of water, power and air along with their fittings
- Florescent light,
- Output power 220V
- Equipped with pneumatic system for selecting instruments
- Equipped with advanced multi head dust channel and its fittings
- Possibility of selecting urban water or reservoir sterile water
- Water-air syringe

● Panorama

● Panorama 2018 (Two operator)

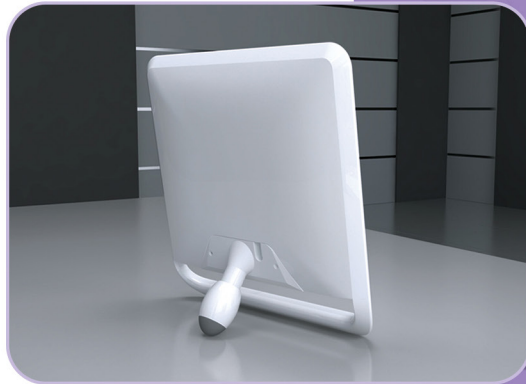


- New panoramic circuit design
- Safety socket for installing optional laboratory equipment on bench
- Possibility of switching benches together
- Gas piping system and its related fittings, with new design equipped with 2 drawers and wearing special drawer
- Filtration system (300cc reservoir tank)
- Operator clear guard shield.
- The cover made of anti scratch and revolution heat-resistant composite

- Micro motor (controllable through pedal)
- Display of micro motor speed and rotation processor
- Knee touching controller pedal
- Counter armrests
- LCD, PC monitor and surgical tray
- Stimulation head phantom



LED-OPG Viewer Advanced New Design



● General Specifications:

- The possibility of adjusting the light intensity (26 levels)
- Multifunction remote control abilities
- Dental unit mounting option
- Desktop and wall mounting ability
- Elegant, modern & hygienic design
- Applying the latest LED technology
- With controlled light spectrum to protect the eyes

● Technical Specifications:

- Voltage/ power: 12V- 3A
- Screen Size: 300 mm* 355 mm
- Dimension: 395 mm * 390 mm* 70 mm

● Accessories



● NC



● LED-FARO- ALYA



● LED-FSA



● LED-FSB



● LCD Monitor &
intra oral camera



● Tray



● New Cuspidor



● Multi Function Pedal



Non Stop Dental Surgery Suction

● New unique design:

- The last solution to common problems and concerns in the application of water suctions, air and central suctions
- Discontinuance of urban drinking water consumption in saliva system which is a brilliant service in environmental protection
- The result of more than 32 years of experience in the design and manufacture of medical and dental suctions
- Reduction of electric power consumption by at least 1.10 to 1/20 in comparison to ordinary electrical suctions
- Suitable for long surgical procedures and direct drainage in the duct sewage system
- Suitable for dental clinics and surgical wards for continuous and day-to-day care
- Desirable, safe, fully intelligent electrical control and stability in uninterrupted operation without additional depreciation
- No need for plumbing and special changes at the clinic or in the dental unit system.
- Discharge and transfer speed of 30 liters per minute
- Equipped with an independent automatic stanchion and great compatibility with all dental unit models
- Fully audio isolation
- Small dimensions with multiple capabilities
- The modern box is designed in accordance with the European standards
- Equipped with Amalgam Separator for isolation of all heavy objects with a capacity of 1200 gr
- Sustainability in electrical oscillations
- Equipped with antibacterial nanocrystalline filter to prevent the release of contaminating in the environment
- Optimal silent and powerful in long-term operation

● Dimensions:

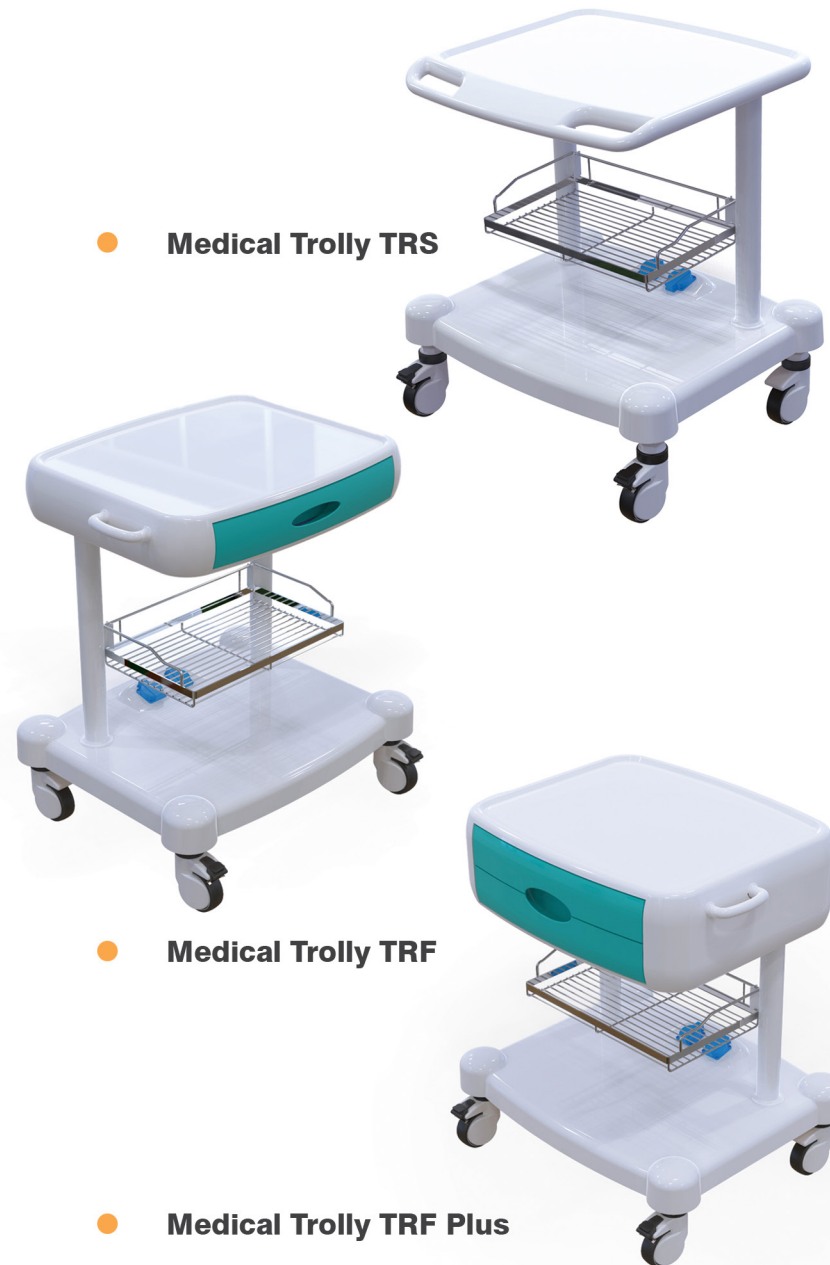
H:380mm, L:180mm, W:440mm
Three years of unlimited warranty and ten years of after-sales service.

● Accessories



● **MS 300 C**
Cart Version

● **MS 600 E**
Dental Mobile Unit
(with compressor)



● **Medical Trolley TRS**

● **Medical Trolley TRF**

● **Medical Trolley TRF Plus**



Accessories

16



● Lotus Stool



● Leather Color Quality



● Special colors of leather





DENTUS

Dental & Medical Equipment

DENTUS central office:

No. 1, first floor Sina Centre Trading Complex Navab
crossroad, Azadi Ave., Tehran-Iran

Main tel: +9821 62808

Tel: +9821 65870224 - 40660041

Postal Code: 1345795599

www.dentus.ir

www.dentusdental.com

info@dentusdental.com



**ISO
13485**



Golden category

**AVA
BRS**
ISO 13485

**AVA
BRS**
ISO 9001

Sale agency:

